

Noteworthy Composer Cheat Sheet

H.M.Müller

↵=Enter ⇞=Tab ←=Backspace

Create new file.
Open file.

Move cursor.

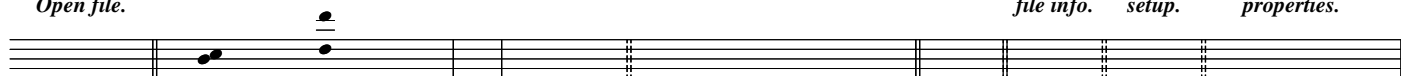
Select items.

Zoom.

Show
file info.

Show page
setup.

Show symbol
properties.



[Ctrl-N] ↓↑ [Ctrl-↓↑] [Ctrl-⇞] [PgUp] [Shift-⇞] [Ctrl-Shift-⇞] [Alt-+] [Alt-F I] [Alt-F G] Select+
[Ctrl-O] or One step One octave One measure One staff Per item Per measure [Alt-+] [Alt-F I] [Alt-F G] [Alt-Enter]
[Alt-F H] [Alt-+] [Alt-+]

Add Clef. Add key Add time Add tempo Set length of following or selected notes. Add single Add Add "ending." Select pitch.
signature. signature. marker. ♩=76 bar line. vertical line. 1.2.



Select stem direction.

Enter note.

Move note/chord
up/down.

Enter rest.

Add
Multi-bar rest.
17

Add chord
note.

Remove
chord note.

Delete item.



Show as
grace note.

Add accidental.

Mark as
courtesy accidental.

Set tie.

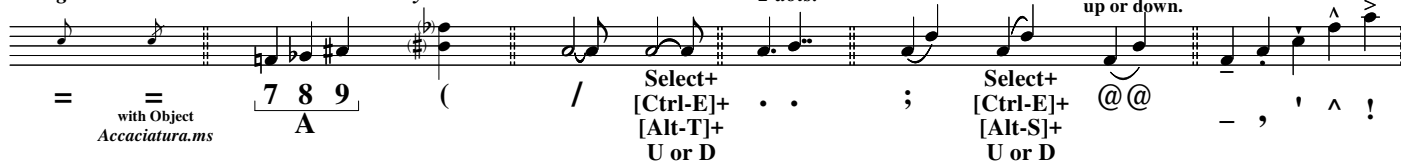
Flip tie.

Add 1 or
2 dots.

Add slur.
Flip slur.

Markers to
shift slur ends
up or down.

Add articulations.



Beam notes.

Add hairpin for
cresc. or decresc.

Mark as Triplets.

Marker to
flip or shift
triplet up/down.

Add pedal mark.

Add dynamic.

Add tempo
variance.

Add performance
style.



Add "flow" symbol.
D.C. al Coda
Fine etc.

Set notehead type.

Change
stem length.

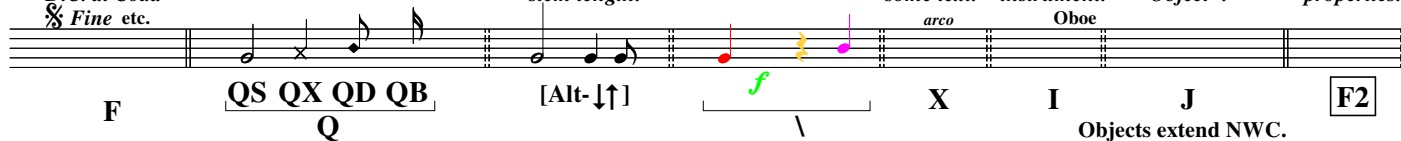
Set color.

Add
some text.

Add
instrument.

Add
"Object".

Show staff
properties.



Show staff
mute list.

Show staff
formatting options.

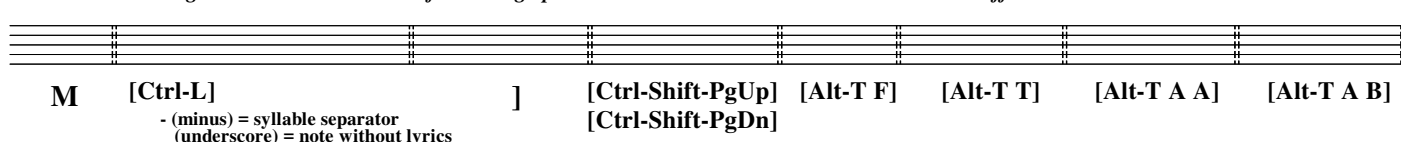
Move staff.

Force
accidentals.

Transpose
staff.

"Audit" (minimize)
accidentals.

"Audit" (repair)
bar lines.



"Audit" (repair)
note stems.

Toggle
viewer mode

Print
preview.

Play

Play active
staff.

Stop
playing.

Stop all
sound.

Play and
record.

