

Cut, Copy and Paste Whole Measures

This tool enables the user to cut (or copy) and paste blocks of measures within a staff. The main use here would be when moving whole sections of tunes around, and you have many staves to repeat this action on. Once you have settled on the correct parameters to achieve your goal on one staff, it is very easy to then “Page Down, Alt-F8, and Enter” to iterate through the remaining staves.

Say we have two parts with some notes in them...



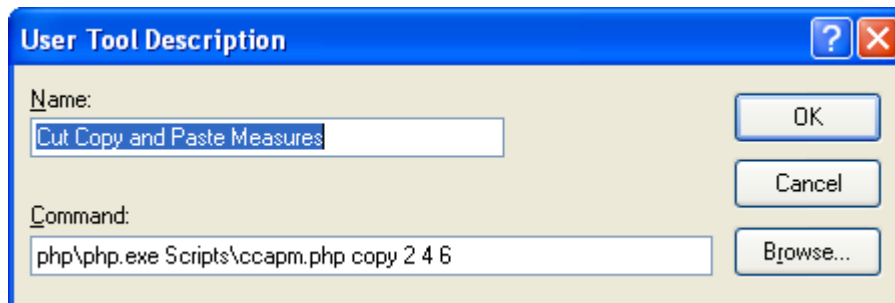
and we like the second three bars so much that we want to repeat them.

NB: it is very handy to have *Measure Numbers* set to something in *Page Setup*. Having saved the php file as ccapm.php in your NWC2 Scripts folder, create the new User Tool entry.

Press Alt-F8 (or menu Tools | User Tools) and click the New button.

Fill in a good descriptive name, click the browse button, search for ccapm.php and choose it.

Lastly we will add some parameters to copy from measure 2 to measure 4 and paste them after the final measure (that is before measure 6).



If we run that on the top staff, (**don't** select any part of the staff – it is best to run this tool over a whole staff, unless you know what you are doing) we'll hopefully get something like this:



Note that the whole of the measure is copied, including the barline, which is pasted onto the end. Also be aware that if we copy a measure that contains key signatures etc, they will be copied too.

Running the tool on the second staff using the same parameters should give us the following:



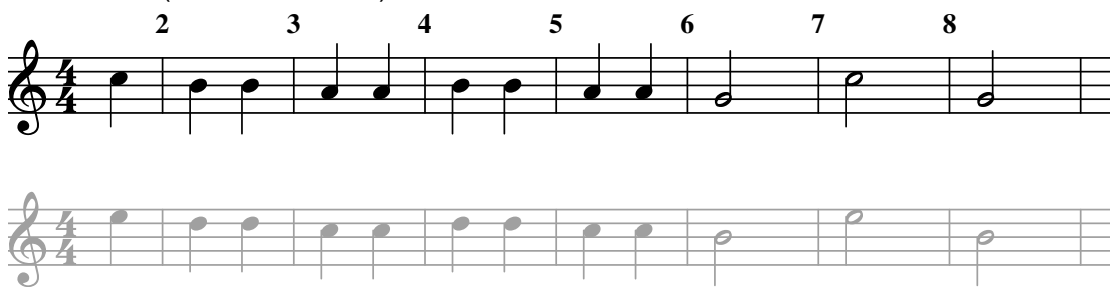
What say we decided that the two measures 4 and 5 should be moved to before the final note, measure 8.

Then our command line would be

```
php\php.exe Scripts\ccapm.php cut 4 5 8
```

which will cut the two measure 4 and 5 and paste them before measure 8.

The result (on both staves) looks like this



A few caveats:

If we copy measure one, we will get any clefs, key signatures or time signatures that are there. If we *cut* measure one, we may be leaving the staff without any of these marks, depending on what the new first remaining bar is. The same consideration should be made when pasting to measure 1. Some “post-processing” of clefs and signatures may be needed in these cases.

The general syntax for this command is

```
<phpinvoker> <phpfilename> (cut | copy) <first> <final> <destination>
```

...where <phpinvoker> is normally php\php.exe

<phpfilename> is normally Scripts\ccapm.php

cut | copy must be one of the keywords “cut” or “copy”.

<first>, <final> and <destination> are all positive integers indicating the measure number (starting with 1) from the start of the selection, or from the start of the staff if no selection is made. So the first measure is 1. This corresponds to the default bar numbering starting at 1. It is suggested that if you have measure number starting at a number other than one, you change it back to one for the use of this tool

<final> must be greater than <first>

<destination> is the measure number taken **before** any cutting takes place.